

GENERAL NOTES

- A. BEARINGS SHOWN HEREON ARE BASED UPON AN ASSUMED BEARING OF NORTH 65°39'19" EAST ALONG THE SOUTH LINE OF TRACT 7, AS SHOWN HEREON.
B. THERE SHALL BE NO BUILDING, OR ANY OTHER KIND OF CONSTRUCTION OR TREES OR SHRUBS PLACED ON DRAINAGE EASEMENTS.
C. THERE SHALL BE NO BUILDING OR OTHER PERMANENT STRUCTURES OR TREES PLACED ON UTILITY EASEMENTS.
E. NOTICE: THERE MAY BE ADDITIONAL RESTRICTIONS THAT ARE NOT RECORDED ON THIS PLAT THAT MAY BE FOUND IN THE PUBLIC RECORDS OF THIS COUNTY.
F. THE LIMITS OF THE LOTS 1 THROUGH 8 INCLUSIVE, 12 AND 13, AND PARCEL C SHOWN HEREON EXTEND TO THE MEAN HIGH WATER LINE AND INCLUDE FULL RIPARIAN RIGHTS TO THE ABUTTING BODY OF WATER.
G. A PORTION OF THIS PROPERTY LIES WITHIN FLOOD ZONE A6. THE BENCH MARK DATUM IS NATIONAL GEODETIC VERTICAL DATUM 1929 (NGVD-29).

A PLAT OF

MARINERS LANDING

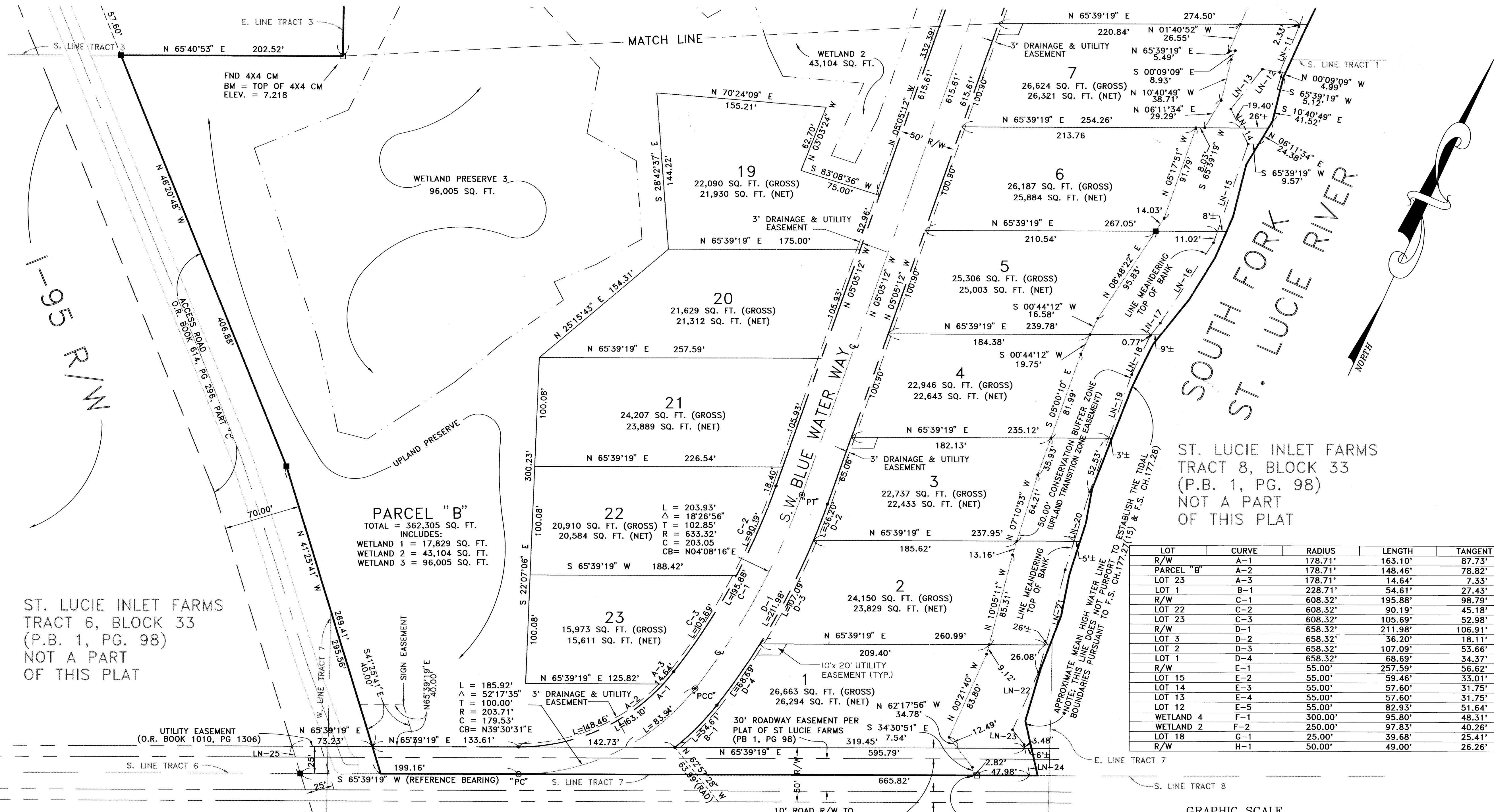
BEING A REPLAT OF A PORTION OF TRACTS 1, 2, 3, 6, 7 AND 8, BLOCK 33 ST. LUCIE INLET FARMS, HANSON GRANT RECORDED IN PLAT BOOK 1, PAGE 98 OF THE PUBLIC RECORDS OF PALM BEACH (NOW MARTIN) COUNTY, FLA.

Filed on 1st DAY of NOV. 1996 in Plat Book 14 Page 18, Public Records of MARTIN Co., FL. File # 122023 MARKS SA STICK CLERK CIRCUIT COURT By Charlotte Bueby et

LEGEND

- PERMANENT CONTROL POINT (PCP)
PERMANENT REFERENCE MONUMENT (PRM)
FOUND CONCRETE MONUMENT
(RAD) INDICATES RADIAL LINE
CENTRAL ANGLE OR DELTA
ARC LENGTH
RADIUS
TANGENT LENGTH
CHORD LENGTH
CHORD BEARING
POINT OF CURVATURE
POINT OF TANGENCY
POINT OF COMPOUND CURVE
LINE TABLE DESIGNATION
A-1 CURVE TABLE DESIGNATION FOR CURVE "A"
B-1 CURVE TABLE DESIGNATION FOR CURVE "B"
C-1 CURVE TABLE DESIGNATION FOR CURVE "C"
D-1 CURVE TABLE DESIGNATION FOR CURVE "D"
E-1 CURVE TABLE DESIGNATION FOR CURVE "E"
F-1 CURVE TABLE DESIGNATION FOR CURVE "F"
G-1 CURVE TABLE DESIGNATION FOR CURVE "G"
H-1 CURVE TABLE DESIGNATION FOR CURVE "H"

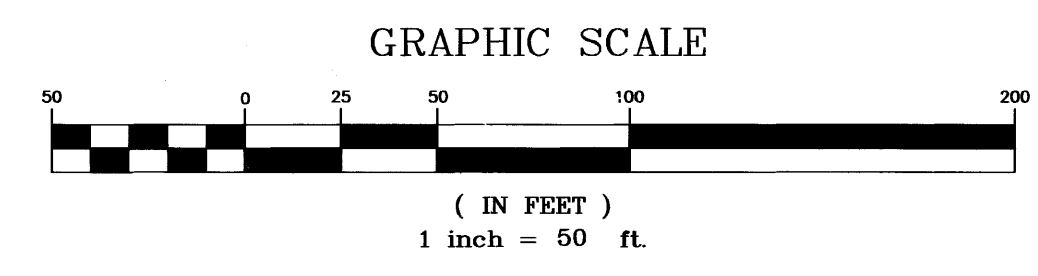
(SEE SHEET 2 OF 3)



BEARINGS & DISTANCES MEANDERING THE TOP OF BANK

Table with columns: LINE, DIRECTION, DISTANCE. Lists meandering lines LN-1 through LN-32 with bearings and distances.

Table with columns: LOT, CURVE, RADIUS, LENGTH, TANGENT, CHORD, BEARING, DELTA. Lists curve data for lots 1-23.



ST. LUCIE INLET FARMS TRACT 6, BLOCK 33 (P.B. 1, PG. 98) NOT A PART OF THIS PLAT

ST. LUCIE INLET FARMS TRACT 3, BLOCK 32 (P.B. 1, PG. 98) NOT A PART OF THIS PLAT

ST. LUCIE INLET FARMS TRACT 2, BLOCK 32 (P.B. 1, PG. 98) NOT A PART OF THIS PLAT

NOTE: NET AREAS AS SHOWN HEREON ARE GROSS AREA LESS ANY DRAINAGE & UTILITY, WATER LINE AND/OR INGRESS, EGRESS EASEMENTS

Keith & Schnars, Inc. ENGINEERS - PLANNERS - SURVEYORS. 101 S.W. FLAGLER AVENUE STUART, FLORIDA 34994 (407) 287-2626. SHEET 3 OF 3 PLAT OF MARINERS LANDING DIVISION